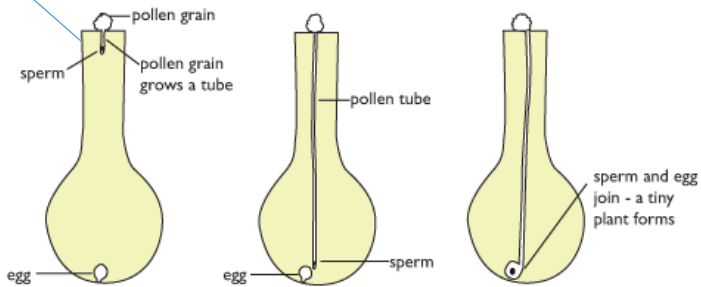


#257418071

Stigma



Key words	
Anther	The part of a flower that produces pollen.
Carpel	Female part of flower (stigma, style and ovary)
Fertilisation	The process pollen nucleus joins with the ovule nucleus.
Fruit	Ovary becomes this after fertilisation. The part of a plant that contains seeds.
Germination	When a seed starts to grow.
Ovary	The part of the flower that contains ovules.
Ovules	The female gamete (sex cell) of a plant. Found in the ovary.
Pollen	The male gamete (sex cell) of a plant. Found on anther (part of the stamen)
Pollination	The transfer of pollen from the anther (male) to the stigma (female) part of a flower.
Seed	Contains the embryo of a new plant.
Seed dispersal	The movement of seeds away from the parent plant.
Stamen	The male reproductive part of a flower.
Stigma	The part of a flower that is sticky to catch grains of pol

Seed dispersal

